

# ***Elisha Baker***

***1756 – 1830+***

**1779.** Elisha Baker, born 1756, married Mary [Polly] Rickman.\* (*U.S. and International Marriage Records, 1560-1900*)

**1781.** Elisha Baker met David Fine, brother of Philip Fine, members of the family from near New Market, Virginia, that settled in the French Broad River area near present Newport, Tennessee. (See 1802 below) (*American State Papers, Public Lands, May 6, 1807; Peter Fine Grant No. 2088, 1787, 200 acres, mouth of Clear Creek, north side of French Broad River; John Fien (Fine) Grant No. 2519, 200 acres, north side of French Broad River*)

**1783.** Elisha Baker listed in Fourth District (South side of Nolichucky River) Assessors Return for Greene County, Tennessee. (*East Tennessee Historical Society publication No. 39, 1967, p. 123; DAR Magazine, April 1919*)

**1784.** Elected a delegate from Greene County for the committee and convention for the formation of the State of Frankland [Franklin], which met August 23 at Jonesborough. (*The Civil and Political History of the State of Tennessee, VI, pp. 149-150; The Annals of Tennessee, pp. 285-286; The History of the Lost State of Franklin, pp. 29-30*)

**Greene County November Court.** Major [John] McNabb is appointed to take the inventory in Captain [Elisha] Baker's company. (*Greene County Court Minutes, November term 1884, p. 35*)

**1785.** Thomas Baker, Elisha and Mary (Polly) Rickman Baker's eldest son is born. (*American State Papers, Vol. 7, pp. 829-830*)

**Greene County May Court.** Company commanders are: Capt. [John] Wear, Capt. Newman, Capt. King, Capt. [Joseph] Bullard, Capt. Vance, Capt. Houston, Capt. [James] Mahans, Capt. [Hugh] Beard, Capt. [Alex] Kelley, Capt. [Elisha] Baker, Capt. David Campbell.

**1786.** "Elisha Baker, military pay warrant, Jan. 4, 1786." (*Auditor's Account XXXI, p. 41, Virginia State Library*)

Elisha Baker is security for the marriage of Samuel Henderson to Lucy Rickman, February 22, 1786. (Lucy Rickman was the sister of Mary Rickman, Elisha Baker's wife). (*Greene County Marriages*)

1787. North Carolina grants (Purchase Grant No. 2033) 640 acres "on the North side Holstein river" in Greene County, Tennessee (Tract lies between Williams and Second creeks, on the north bank of the river and includes the greater part of present downtown Knoxville, Tennessee) to Elisha Baker, recorded September 20, 1787. (*Tennessee State Library and Archives, Roll No. 13, Book 2, p. 200; North Carolina Land Grants in Tennessee 1778-1791, p. 43*)

Elisha Baker was bondsman for the marriage of: Samuel Lusk to Elizabeth Stuart, Feb. 12/18, 1787; Abijah Fowler to Eleanor Watkins, Feb. 18, 1787; Thomas Lusk to Abigail Montgomery, June 12/18, 1787. (*Tennessee Cousins, p. 80*)

Greene County August Court. Elisha Baker, John Gass, James Patterson, David Rankin, John Wear, Justices of the Court. (*Minutes, August term 1787, p. 201*)

Greene County November Court. Captain [Elisha] Baker directed to take inventory in his own company. (*Minutes, November term 1787, pp. 88-89*)

Birth of Elijah Baker, son of Elisha and Mary (Polly) Rickman Baker. (*See 1830 Pope County, Arkansas Census*)

1788. Greene County August Court. Abraham McCoy is directed to take the inventory in the companies of Capt. [Elisha] Baker and [Peter] Fine. (*Minutes, August term 1788, p. 96*)

August 15, 1788. Elisha Baker was directed to appear in the February 15, 1789 Superior Court of the District of Washington in Jonesborough to show cause for failure to appear to serve as a juror at the August 1788 court. (*Loose copy of August 15, 1788, directive by Francis A. Ramsey, Clerk of the Court*)

August 23, 1788. James White is granted 1000 acres of land on the north side of the Holston, beginning "along Bakers line," of Elisha Baker's 640-acre grant at the present site of downtown Knoxville, Tennessee, and west of Baker's grant. (*Tennessee State Library and Archives, Greene County, Roll No. 5, Book C, p. 203*)

1789. Greene County February Court. Court orders Elisha Baker, Esq. be appointed to collect the taxes on the south of Nolichucky for 1787 and 1788. (*Minutes, May term 1789, p. 108*)

1790. Beverly R. Baker, son of Elisha and Polly Baker, is born. (*See 1830 Lawrence County, Arkansas Census; 1840 Randolph County, Arkansas Census; 1850 Ripley County, Missouri Census*)



State of North Carolina

To the Sheriff of Greene County Georgia.

Witness Elisha Rader & family your Petition as a favor  
to leave out August Term 1788 refusing to appear being  
sorely called upon accompanied ten pounds

There are therefore concerning you that by good  
and dispassionate of your Court you make known  
to the said Elisha Rader that he appear at our next Supers  
at Court of law to be held for the District of Washington  
in the Court house in force of law. The fifteenth day of Febru  
ary next to show cause if any he can why execution  
against his Estate and chattels should and remain out  
should not issue.

Witness John in Attorney Clerk of said Court office  
the fifteenth day of August Anno Domini 1788 and  
Xth of our Independence

Attest  
John in Attorney Pub. Clk.



**1791. Greene County May Court. Elisha Baker named to Grand Jury. (Minutes, May term 1791)**

**A deed of conveyance from Elisha Baker to James White, dated May 2, 1791, for 640 acres was duly acknowledged in court by the said Elisha and admitted to record (Land was on north side of Holston at the site of present downtown Knoxville, Tennessee). (See 1787, Elisha Baker Grant 2033). (Minutes, May term 1791, p. 206; Greene County Deed Book 2, p. 216; Tennessee State Library and Archives, Roll 179, Book 2, Feb. 1785-July 1797, pp. 216-217)**

**Greene County August Court. Elisha Baker sworn as a Justice of the Peace. (Minutes, August term 1791, p. 207)**

**Ordered that a road be laid off from Benjamin Crow's (Meadow Creek) to Greene Courthouse and Elisha Baker, Samuel Gregg, Benjamin Crow among those ordered to view and mark. (Minutes, August term 1791)**

**Greene County November Court. Justice Elisha Baker appointed to take the inventory of taxable property for the years 1791 and 1792 in Captain Samuel Gregg's company. (Minutes, November term 1791)**

**1792. Greene County February Court. Elisha Baker, Esqr., returns the list of taxable property for the year 1791 and 1792 in Captain Samuel Gregg's company. (Minutes, February term 1792, p. 236)**

**Greene County November Court. Elisha Baker, Esqr., directed to take the inventory in Captain [Samuel] Gregg's company. (Minutes, November term 1792, p. 269)**

**1793. Elisha Baker granted (No. 1170) 300 acres in Greene County on both sides of Long Creek at the head of Walnut Valley, north of the French Broad River, on January 11. Elisha's grant adjoined William Bogleton [Boylston, Boydston] on the north and Andrew Brigham [Bigham] on the west. The following day, January 12, Elisha was granted an additional 200 acres (No. 1174) on Long Creek, adjoining his 300 acres on the south. This tract adjoined William Brigham [Bigham] on the west and Nathaniel Brigham [Bigham] on the south. (Greene County Deed Book 1, pp. 336-337; Boylston Land Grant No. 2461, 200 acres, 1791, Sinking Cane Creek, north side French Broad River; "Boylston's" (Boydston's house attacked by Cherokees, Annals of Tennessee, p. 190)**

**1795. Elisha Baker is security in the marriage of Thomas Wilson to Margaret Sherill, February 9, 1795. (Greene County Marriages)**



1796. Elisha Baker elected a delegate from Greene County for the Constitutional Convention for the formation of the State of Tennessee, which met January 11 at Knoxville and was in session for 27 days. (*The Annals of Tennessee*, pp. 650-652; *Tennessee Cousins*, p. 79)

April, 23, 1796. Elisha Baker commissioned Justice of the Peace for Greene County, Tennessee. (*Commission Book of Governor John Sevier, 1796-1801*, p. 16)

Greene County May Court. Elisha Baker, one of the Justices of the Court. (*Minutes, May term 1796*)

1797. "Elish" Baker proves 13 days as witness in Greene County Court suit. (*Minutes, February term 1797*, p. 3)

*Greene County February Court.* Appoints Thomas Love, Esqr., to receive the inventory of Captain [Samuel] Gregg's company, replacing Elisha Baker.

Deeds of conveyance from James Hall to Robert Wyly, dated December 20, 1796, for Lovelady Island in the Nollichucky River and for 100 acres of land, proven by the oath of Elisha Baker. (*Minutes, February term 1797*)

*Greene County May Court.* E. Baker, Esqr., testified in court regarding Jesse Lynch's treatment of Mary Goforth, an orphan, bound to Lynch. (*Minutes, May term 1797*)

Elisha Baker is security in the marriage of William Rickman to Mary Hopkins, May 12, 1797. [William Rickman was the brother of Abraham Rickman and Mary (Polly) Rickman, wife of Elisha Baker] (*Greene County Marriages*)

*Greene County November Court.* Court met "then present and on the seats the worshipful Elish Baker, John Gass, Thomas Gillis," etc., justices. (*Minutes, November term 1797*)

Elisha Baker returned a bond in the case of Elizabeth Wilson. (*Minutes, November term 1797*, p. 69)

1798. Elisha Baker and Thomas Love, magistrates, give evidence in State vs Betsey Shafer in January court, Greene County.

1799. January 5: Elisha Baker, Joseph Conway, Fathias Wall and Nathaniel Christmas commissioned Justices of Cocke County, Tennessee. (*Sevier Commission Book*, p. 48)

**Elisha Calvin Baker, youngest son of Elisha and Polly Baker, is born.**

**1802. "Grants of Claims Founded on Settlements. Elisha Baker's representatives. Permit Jan. 25, 1806. 800 arpents. Little Rock Creek, St. Louis County. Possibly inhabited and cultivated from 1802 to 1813. Opinions of the recorder: Granted 640 acres." (*American State Papers, Public Lands, June 13, 1812 – April 12, 1814*)**

**In testimony regarding the settlement of David Fine, brother of Philip Fine [early settlers in the French Broad River area near present Newport, Tennessee] in Upper Louisiana, on May 6, 1807, Elisha Baker said he knew David Fine "about twenty-six years ago" [1781], that he arrived in Upper Louisiana with Fine "in April of the year 1802" and in February or March, 1803, he saw Fine on his land and in July corn was growing on the tract. Elisha's first land grant in Upper Louisiana was on Little Rock Creek, eight miles south of David Fine's settlement. (See above) (*American State Papers, Public Lands*)**

**1803. Elisha Baker, listed with 11 children and one slave as a member of the Bellevue Settlement, on the banks of Big River, in Upper Louisiana [Washington County, Missouri]. He was witness to the settlements of William Boydston, Abraham Rickman, John Rickman, John Janes, Jr., John Janes, Sr., William Janes, son Elijah Baker, John Corder, William Ashbrook, Lemuel Wakely, James Brown, all former inhabitants of Greene County, Tennessee.**

**In testimony before land commissioners in Potosi, Washington County, Missouri, May 6, 1833, William Davis testified that Thomas Baker [b. 1785] told him that his father [Elisha Baker] and Benjamin Crow notified all those seeking settlements in the Bellevue valley to be on their claims on a certain day, remaining there until Elisha Baker and Crow came around to witness the occupancy of the claims; and that they would then go to St. Louis as witnesses to prove the claims. Elisha was probably responsible for the settlers in the northern portion of the Bellevue, while Benjamin Crow was the leader of the southern settlers of the settlement. (*American State Papers, Vol. VII, Public Lands, p. 830*)**

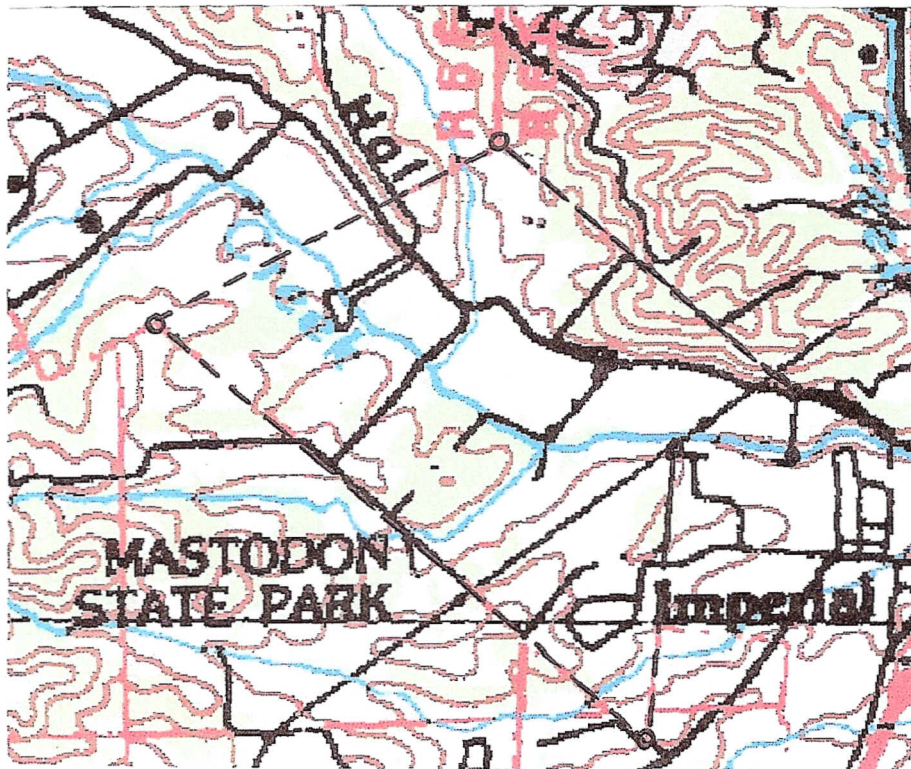
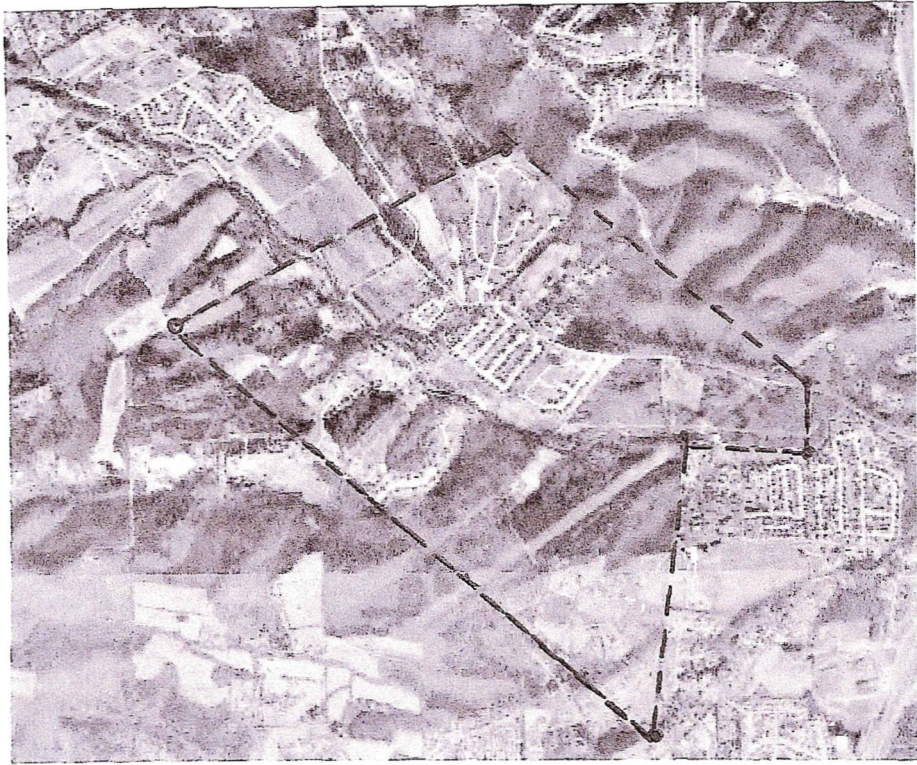
**"Elisha Baker...removed...to Bellevue valley, and his son, Elijah [b. 1787], in 1803 settled in the 'Pineries,' four miles from his father, on Clear Water Creek..." (*History of Missouri, Vol. 1, p. 372*)**

**"Elisha Baker, claiming one thousand four hundred and twenty six arpents eighty nine perches of land, situate on Bellevue settlement, district of St. Genevieve...survey...15<sup>th</sup> February, and certified to be received for record by Antoine Soulard the 27<sup>th</sup> February, 1806, a written permission to**





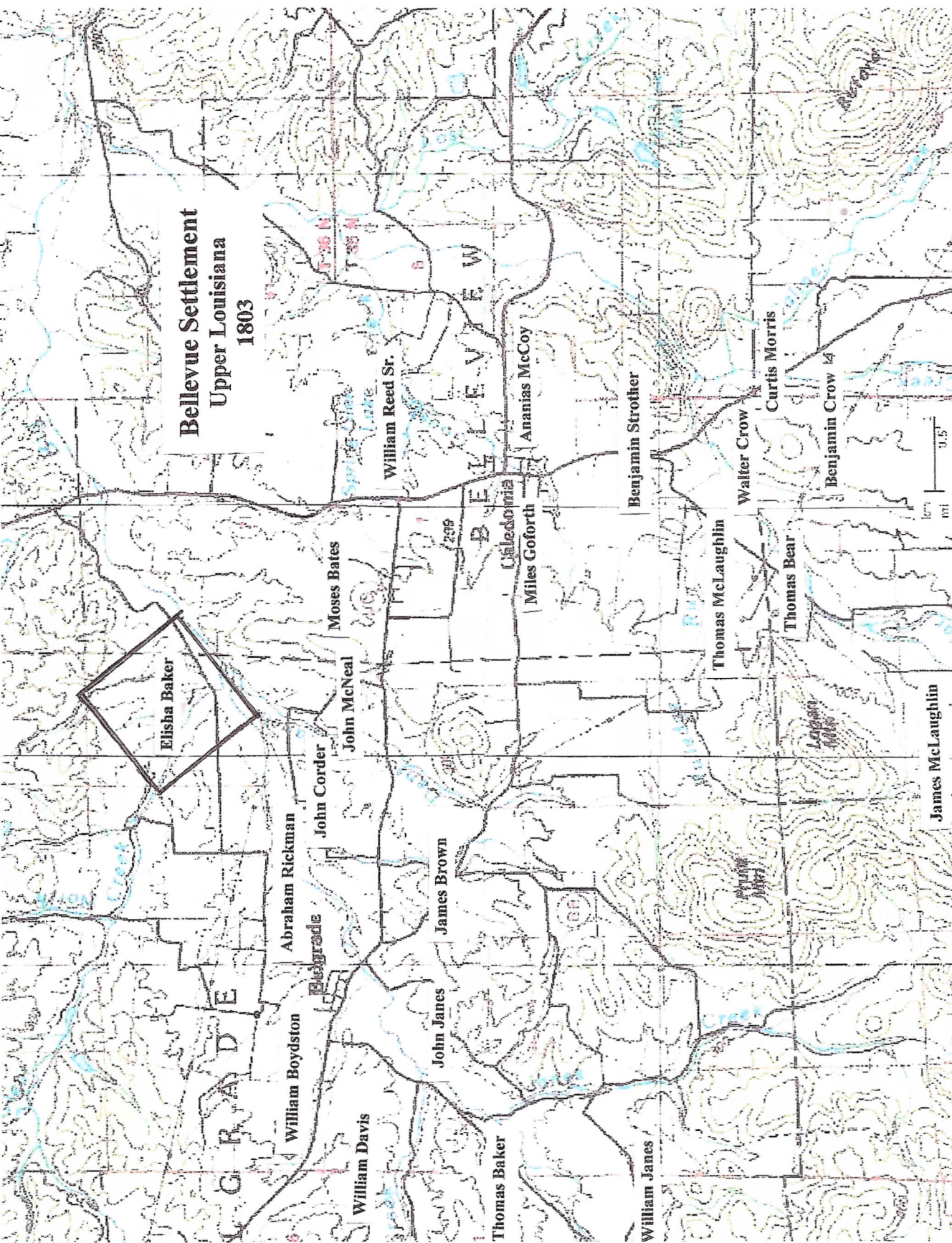




km 0.4  
mi 0.2

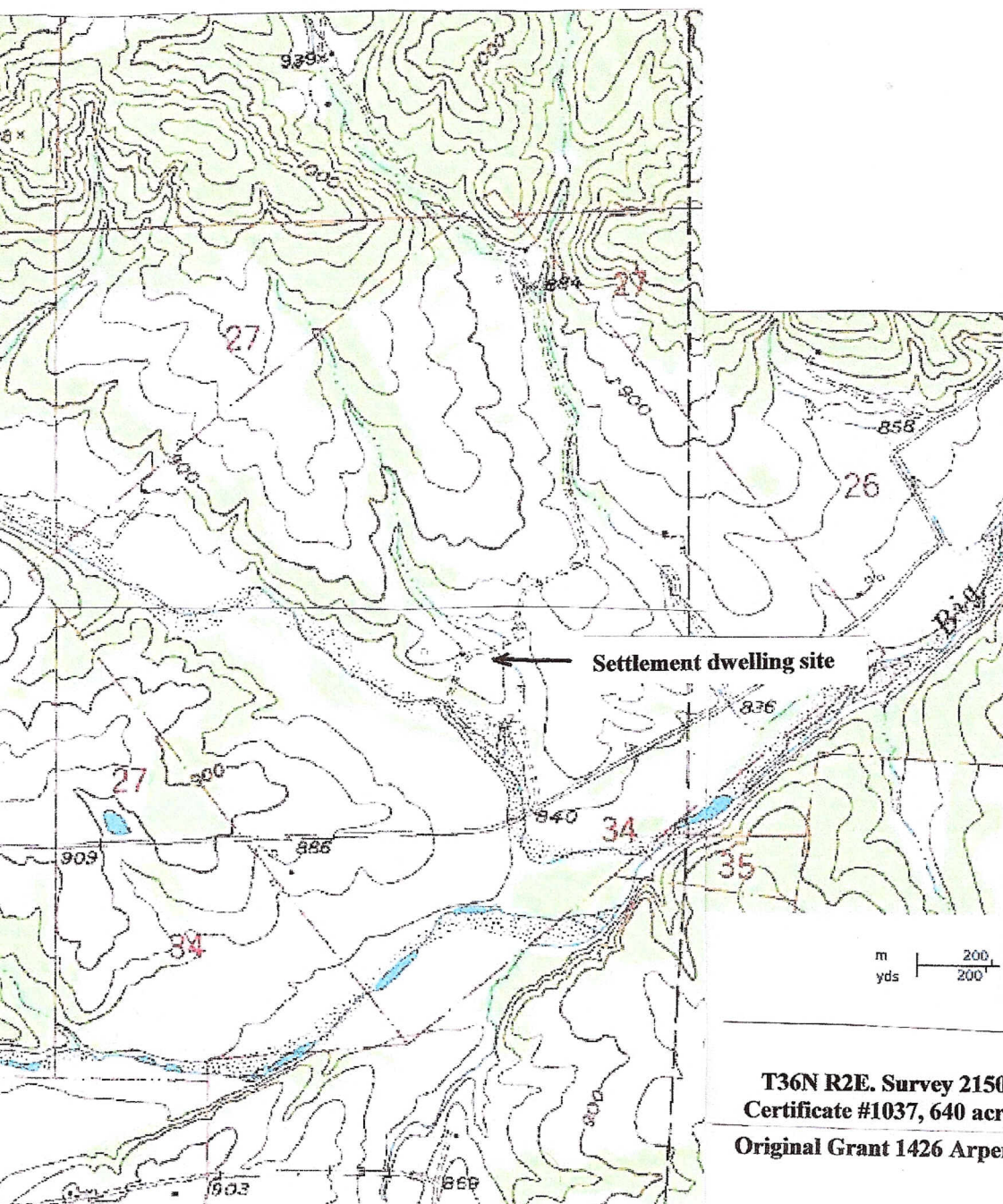


# Bellevue Settlement Upper Louisiana 1803





**Elisha Baker's Bellevue Settlement**  
**Big River & Clear Creek, Washington County, Missouri**  
**1803-1816**



**T36N R2E. Survey 2150**  
**Certificate #1037, 640 acres**  
**Original Grant 1426 Arpents**



settle on said land by Joseph Decelle, ancient syndic at the Mine a' Breton, district aforesaid, dated 7<sup>th</sup> November, 1803." Walter Crow [son of Benjamin Crow], witness, testified that in October 1803, he went with Elisha Baker to examine a place for settlement and Elisha began the settlement in the fall of that year; built a cabin; that he hired a man that fall to clear a spot for settlement, and planted fruit trees, such as peach, etc., and that "his two sons [elder sons Thomas and Elijah]" inhabited the settlement on the 20<sup>th</sup> December, 1803, and that in January, 1804, he moved the rest of his family to the settlement. This was Elisha's second grant in Upper Louisiana. (Survey 2150, north side of Big River, between the present communities of Hunters Mill and Belgrade, Washington County, Missouri) (*American State Papers, Public Lands, Vol. 2, p. 530*)

1805. A petition to the Governor of the Territory of Louisiana, General James Wilkinson, recommending the appointment of Henry Dodge for the office of Sheriff of the District of St. Genevieve, dated June 25, listed Elisha Baker, Thomas Baker, and Elijah Baker. (*Territorial Papers of the United States, Vol. XIII, Louisiana-Missouri Territory, 1803-1806, pp. 138-141*)

1806. A Memorial to President Thomas Jefferson by the citizens of the Territory of Louisiana, recommending either Return J. Meigs, Jr. or Col. Samuel Hammond to succeed General James Wilkinson as Governor of the Territory, "No Date, 1806," included Section 26, totaling 39 Subscribers, from the Bellevue Settlement area, with Elisha Baker heading the list, and Elijah Baker and Thomas Baker, third and fourth on the list respectively.

1807. A letter, dated May 30, 1807, to "Messrs Elisha Baker, Moses Austin, Darius Shaw, and Jos Whittlesey, Mine a' Burton [Breton]," from Frederick Bates, Secretary of the Territory of Louisiana, acknowledging their proposal for an association of 67 individuals as a military school and the tendering of their services to the President, requested them to nominate officers for the volunteer companies. (*The Austin Papers, Vol. II, Annual Report of the American Historical Association, 1919, p. 126*)

On June 23, Secretary Frederick Bates notified Elisha Baker, Darius Shaw, John Andrews, and J. Stewart that he had communicated their offers of service to the President, plus copies of their letters regarding their association. (*The Papers of Frederick Bates, Vol. II, p. 149*)

On August 26, Elisha Baker was appointed Justice of "Belle View" of the St. Genevieve District. (*The Papers of Frederick Bates, Vol. II, April 1, 1807-March 31, 1808, p. 325*)

1811. Elisha Baker appointed Justice of "Belle Vue" on October 11. (*The Papers of Frederick Bates, Vol. II, p. 198*)

**1812. Elisha Baker, on May 1, sold his grant of “six hundred arpens” in the District of St. Louis on Little Rock Creek to Jeduthan Kendal, witnessed by Theresa Baker and Medelda Easter. Thirteen years later, June 25, 1825, William Russell presented the deed to Elisha Baker [now living in Arkansas Territory] for acknowledgement. Russell related that “Baker was old, infirm, and not in good health” and unable to travel to have his acknowledgement certified. The deed was recorded on June 29, 1826, in the Circuit Court of St. Louis County, State of Missouri. The Recorder of Land Titles of the Territory of Missouri recorded the tract as an 800 arpent grant, finally approved for 640 acres. (*American State Papers, Public Lands*)**

**1814. A deed for a tract of land in Washington County, Missouri Territory, conveyed on February 12, by Blandaman Smith to Solomon Davis, adjoining Elisha Baker’s line, was witnessed by Elisha Baker and William Davis. (*Washington County Deed, September 25, 1817*)**

**1815. A deed of conveyance (horses, cows, calves, furniture) from Elijah [Elisha] to Beverly R. Baker was recorded June 8, in Lawrence County, Arkansas Territory. (*Lawrence County, Arkansas Territory Deeds, June 8, 1815*)**

**1816. “Elisha Baker and Polly his wife” of Bellview Township, Washington County, Missouri Territory, on May 5, 1816, sold their 640-acre settlement in the Bellevue Settlement on the north side of Big River to John Hutchings of the County of Casey, State of Kentucky. The deed was witnessed by Samuel Thompson and Elisha’s eldest son Thomas Baker. (*Washington County Deed, June 3, 1816*)**

**Elisha Baker, “Thomas Baker & wife,” and Elijah Baker are listed as among the 73 members of “the first Presbyterian Church formed west of the Mississippi.” The first meeting took place Wednesday, July 31, 1816, and another meeting on the following Friday. (*History of Missouri, Vol. III, p. 228*)**

**As early as 1815 [See above], Elisha and Polly are believed to have migrated south, with their sons, Thomas, Elijah, Beverly, Luther, and Elisha Calvin, first into Lawrence County, Arkansas Territory. Thomas, Beverly and Luther would remain in Lawrence County, on Janes Creek (now Randolph County), while Elisha and Polly with sons Elijah and Elisha Calvin, moved farther south into Arkansas Territory with other members of the Bellevue Settlement.**

**1817. Survey 2150, Docket 181, June 7, 1817, for 640-acre patent for Elisha Baker at T36N, R2E, (on Big River, Bellevue Settlement, Washington County, Missouri Territory), with notation signed by Theodore Hunt that Elisha Baker is entitled to receive a patent for the tract. Patent issued to**



**Elisha Baker's representatives March 26, 1829. (*Certificate #1037, Vol. 1 Plats, October 24, 1825; Patent recorded Vol. 7, pp. 88-91 or Misc. Vol. 468, p. 88, Private Land Claims, Bureau of Land Management, Silver Spring, Maryland; Survey/docket, Washington National Records Center, Suitland, Maryland*)**

**1821. March 22, Elisha Baker, of Hempstead County, Arkansas Territory, sells slave girl to Huitt (Hewitt) Burt. (*Hempstead County, Arkansas Common Pleas Court, August 6, 1821, Land Records, Book A, pp. 19, 65*)**

**April 27, Elisha Baker, of Hempstead County, Arkansas Territory, conveys to his son Thomas Baker, of Lawrence County, Arkansas Territory, slave girl Violet, age 16, witnessed by Zachariah Goforth and John Bellar (Bellah). Zachariah Goforth was the son of Miles Goforth of the Bellevue Settlement, Missouri Territory. (*Court of Common Pleas, Lawrence County, June 6, 1821, Book B, p. 358*)**

**1828. On July 20, 1828, in Hempstead County, Arkansas Territory, Elisha Baker conveyed to his youngest son, Elisha Calvin Baker [b. 1799] two slaves, a girl named Cloe and a boy named Hampton. (*Hempstead County Circuit Court, Land Records, August 4, 1828, Book B, p. 207*)**

**1829. Patent #1037, Survey 2150, T36N, R2E (640 acres, Bellevue Settlement) issued March 26, 1829, to Elisha Baker's representatives (See 1817 above). (*Original plat in National Archives*)**

**1830. Census for Pope County, Arkansas Territory, lists Elijah Baker [b.1787], Elisha's son, with a family of eleven, including six males and five females. One male was born 1780-1790 [Elijah]; another was born 1750-1760 [his father Elisha]. The oldest female was born 1790-1800 [Elijah's wife], indicating that Elisha's wife, Polly [Mary Rickman], was no longer living. Leaving some of his sons and families in northeast Arkansas, Elisha had accompanied sons Elijah and Elisha Calvin to Hempstead County, Arkansas Territory. (*Pope County, Arkansas Census, 1830*)**

**Preceding the 1830 listing of the Elijah family census, was the census of the family of James Brown, father of Elijah's wife Hannah, who accompanied the Bakers during their migrations. Brown was in the Bellevue Settlement in Missouri Territory in 1804, with Elisha Baker witness to Brown's land claim. On June 8, 1815, James Brown was witness to a deed of conveyance (horses, cows, calves and furniture) from Elijah Baker to Beverly R. Baker (1790-1850+) in Lawrence County, Arkansas Territory. However, this transaction was probably an instance in which Elisha, the father of Beverly and Elijah, was misspelled as Elijah. (*Pope County, Arkansas, Census 1830*)**

Elisha Calvin Baker (b.1799), who accompanied his father Elisha and brother Elijah into southwestern Arkansas Territory, was listed in the Hempstead County census of 1830 with a family of eight males, including himself, and three females, including his wife. One of the males was listed as between 20-30 years of age, indicating he perhaps was a member of his wife's family.

1838. A 147.6-acre land grant in Section 9, Township 6 North, Range 20 West in Pope County is recorded for Elijah. Section 9 extends to both sides of the Arkansas River, from the southwest side of the river in what became Yell County in December 1840, south of Dardanelle, to the north side in Pope County and is now part of the Galla Creek State Wildlife Management Area. Another grant was issued to Elijah Barker [Baker] in Section 15, which also extends to both sides of the Arkansas River (adjoining the southeast corner of Section 9), same township, Range 20 West, for 155.56 acres. (*Arkansas Land Grants, Pope County*)

1840. Elijah Baker listed in Dardanelle Township, Pope County, with his wife, five sons and two daughters. Father Elisha is no longer listed, placing the time of his death between 1830-1840. Elijah's neighbors include C. [Charles] H. Fitch, Joseph Ludden, John Barnsmore [Barnmore] and R. [Richard] Wicker. (*Pope County, Arkansas 1840 census, Dardanelle Township*)

1844. Another 80-acre grant is recorded for Elijah Baker in Yell County [Pope County until December 1840], Section 31, the same Township 6 North, Range 20 West. State Highway 7 goes through the center of the section between the communities of Prosperity on the north and Centerville on the south. It was in Township 6 North that Elisha Baker spent his final years with his son Elijah's family. (*Arkansas Land Grants, Yell County*)

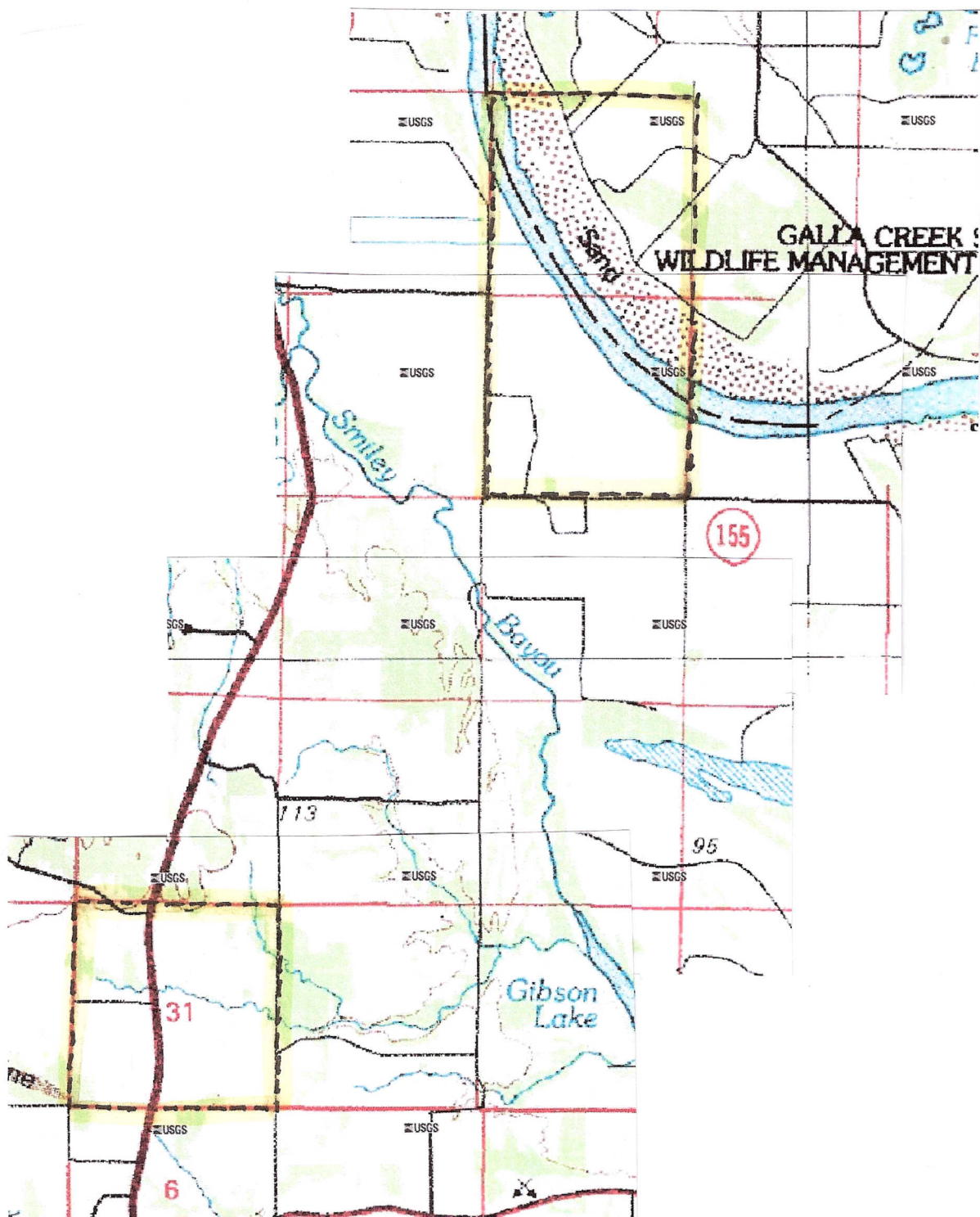
\*\*\*\*

See also references to Elisha Baker: Pat Alderman, *The Overmountain Men*, p. 190; Tennessee Department of State, *Tennessee Blue Book*; Dave Foster, *Tennessee: Territory to Statehood*, p. 52; Tennessee General Assembly, *Journal of the Proceedings of the Legislative Council of the State of Tennessee*, p. 44; Charles A. Miller, *The Official and Political Manual of the State of Tennessee*, p. 79; Robert Sidney Douglas, *History of Southeast Missouri*, Volume I, p. 63; Joshua William Caldwell, *Studies in the Constitutional History of Tennessee*, p. 166.



## Elijah Baker's Lands in Pope & Yell Counties, Arkansas (Elisha Baker's last locations)

From the top: Elijah Baker's lands were part of Sections 9 and 15  
(both sides of Arkansas River), Section 31 (north of Centerville, Yell County)  
Township 6 North, Range 20 W



**Elijah Baker's Lands in Pope & Yell Counties, Arkansas  
(Elisha Baker's last locations)**

**From the top: Elijah Baker's lands were part of Sections 9 and 15  
(both sides of Arkansas River), Section 31 (north of Centerville, Yell County)  
Township 6 North, Range 20 W**





**\*Elisha Baker's wife, Mary (Polly) Rickman, was the daughter of John and Anne Rickman.**

**John (born 1745, Halifax, VA; died 1803, Chatham, N.C.) married (1) Anne. Their children included:**

**William,**

**Lucy, married 3/14/1785, Samuel Henderson (1759-1828),**

**Tabitha, married a Strickland,**

**Mary (Polly), (born 1765, Chatham, N.C.; died 1816 Arkansas) married Elisha Baker.**

**John married (2) Sarah. Their children included:**

**Ann,**

**Abraham, born October 4, 1777, Clover, Halifax, VA; died August 10, 1857, Lawrence, MO.**

**John Rickman was the son of Thomas Rickman, born 1718, Prince William, VA; died 1761, Kittervan, Charles City, VA, and Elizabeth, born Prince William, VA.**

**Thomas Rickman was the son of Robert Rickman (1683-1783) of Hampshire, England; died Charles City, VA, married Tarmar Reynolds (1684-).**

**Robert Rickman was the son of Robert Rickman (1647-) of Ringwood, Hampshire, England; married E. Bishoppe [Bishop].**